

Crime trends and performance in Brighton & Hove

This report describes crime trends up to May 2008 and reports progress against key crime targets relating to the Community Safety, Crime Reduction and Drugs Strategy, 2008-11.

1. Performance against Targets for Key Crime Types, 2008/09

April 2008 to end of May 2008

	number of crimes Apr-May 2007	number of crimes Apr-May 2008	reduction on target (from 2007/08 baseline)	2008/09 performance to end May compared with same period in 2007/08		better or worse than same period in 2007/08	
areas with targets			target	on target	not on target	better	worse
Total Crimes	5078	4375	-5%	-20.9%		☺	
Criminal Damage	960	823	-5%	-14.3%		☺	
Assault: Serious Injury (GBH/more serious violence)	30	25	-10%	-16.7%			
Assault: Less Serious Injury (ABH)	403	338	-5% (tbc)	-16.1%		☺	
Domestic Burglary	164	221	-5%		+34.8%		☹
Theft from/of a Motor Vehicle	372	338	-6%	-9.1%		☺	
Pedal Cycle Theft	130	130	-10%		0.0%	☹	☹

NB. Performance data for 2008/09 up to the end of May shown in the above table only cover a 2 month period. For this reason, they can be subject to some exaggerated effects due to normal variations in data, especially in those crime areas where there are relatively low numbers.

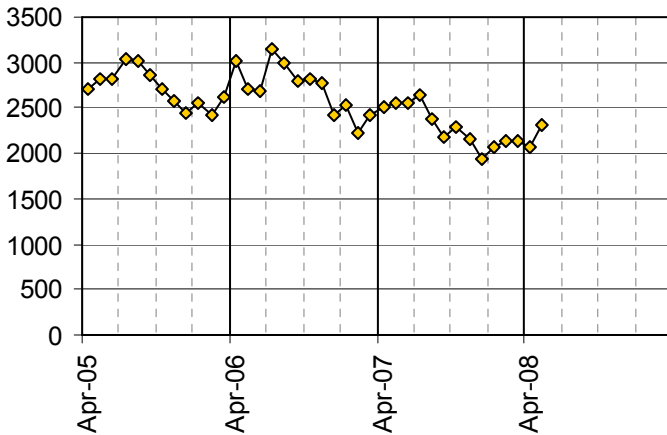
Main points

After 2 months (April 2008 – May 2008) total crimes had reduced by 20.9% compared with the same period in the previous year, well in excess of the target. While only based on 2 months' data, this begins the performance year on a very encouraging note.

Criminal damage, violent crime and vehicle crime are all showing very good reductions at this stage. Domestic burglary, part of the Acquisitive Crime section in the Strategy, is the only crime area showing a notable increase.

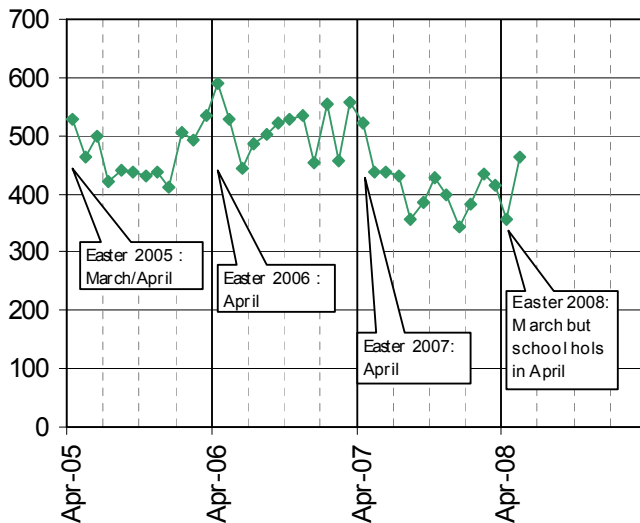
2. Crime trends up to May 2008

Total Crimes, April 2005 to May 2008



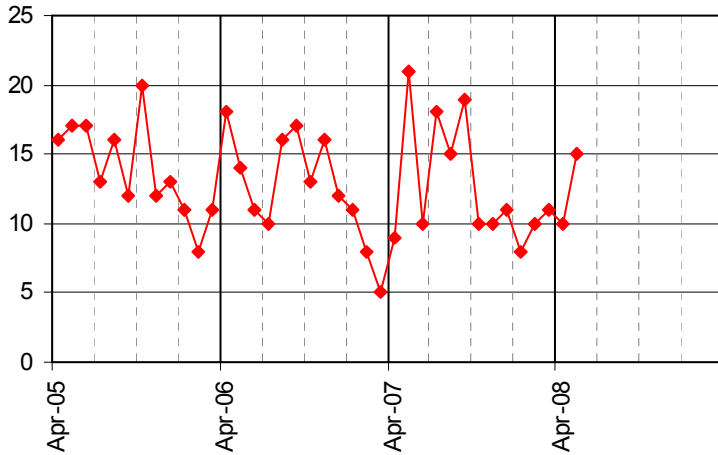
- The number of total crimes in the first 2 months of 2008/09 is lower than in the same months last year. Although total crimes recorded in May have increased since levels since January, this is in line with typical seasonal trends which tend to show enhanced levels in the summer when the city has more visitors and more people out of doors.

Criminal Damage, April 2005 to May 2008



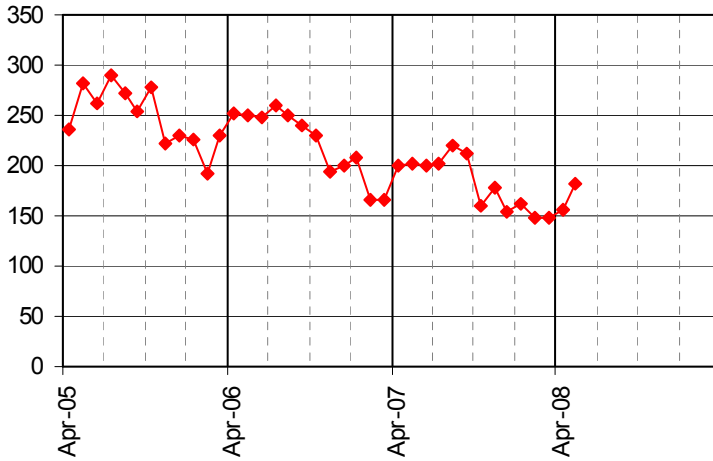
- There has been a degree of fluctuation from month to month, but levels of criminal damage over the last year have, on average, been considerably lower than the year before. The number of criminal damage offences in May was at its highest level for 12 months at 465 crimes. This was about 100 more than recorded in April.

Assault with Serious Injury (GBH+)
April 2004 to May 2008



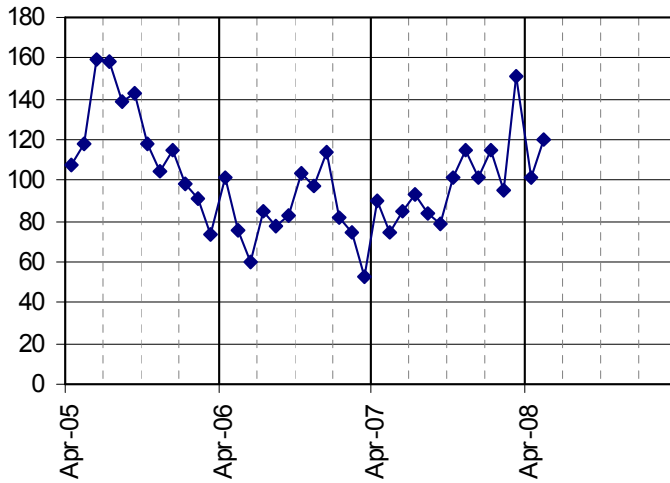
- The number of assaults with serious injury (grievous bodily harm and more serious violent offences) has shown a seasonal pattern over the last three years with more crimes in the summer months. Numbers are low within this grouping compared with those with less serious injury.

Assault with Less Serious Injury (ABH)
April 2004 to May 2008



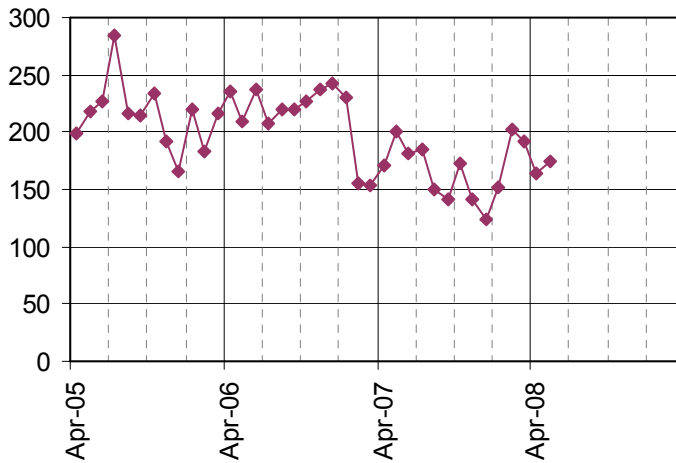
- Numbers for the first two months of 2008/09 are 16% fewer than the same months last year. As with more serious assaults, assaults with less serious injury show a clear seasonality and year on year decline.

Domestic Burglary, April 2004 to May 2008



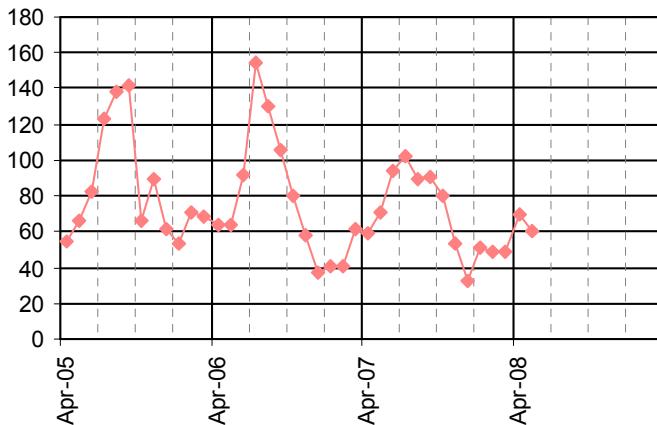
- Numbers of domestic burglaries were showing a long term declining trend in the years up to 2006/07 but have risen consistently during 2007/08. Although the numbers in April and May 2008 have dropped from the March peak they are about 35% higher than in the same months of last year.

Vehicle Crime, April 2004 to May 2008



- The number of thefts of and from a vehicle continue at a relatively low level, compared with the average in 2005/06 and 2006/07.

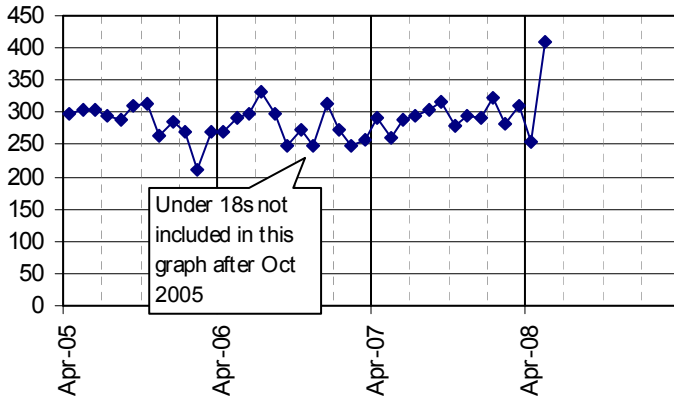
Theft of a Pedal Cycle, April 2004 to May 2008



- Pedal cycle theft shows a strong seasonal effect related to the months when more people cycle. Numbers in the first two months of 2008/09 are the same as in the same months in 2007/08.

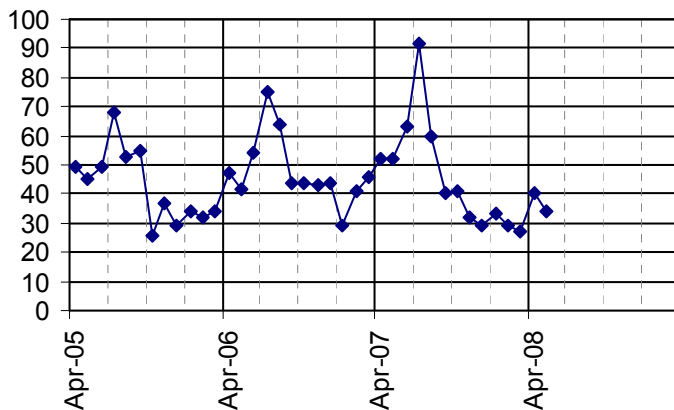
Police crime data presented in this report only reflect those crimes which are reported and recorded. There is likely to be a level of underreporting in many crime types. However, domestic violence and the hate crimes on this page are likely to be particularly liable to underreporting.

Domestic Violence Crimes and Incidents,
April 2004 to May 2008



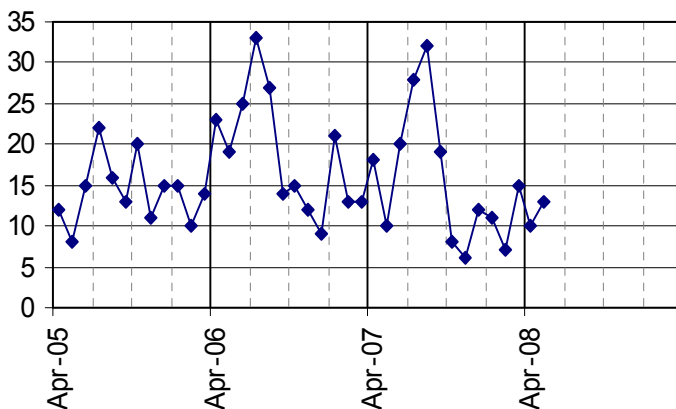
- The number of domestic violence crimes and incidents has generally remained in the region of 250 to 300 per month, except for the most recent month of May when it suddenly increased to over 400. This increase in May was in both crimes and incidents and was particularly notable in 5 of the city's wards.

Racist and Religiously Motivated Crimes and Incidents, April 2004 to May 2008



- A long term rising trend, as well as a seasonal pattern (with enhanced levels in the summer, particularly the month of July), has previously been evident in the data on racist and religiously motivated crimes and incidents. However, levels over the last seven months have been lower than in the same months the year before.

Homophobic, Biphobic and Transphobic Crimes and Incidents, April 2004 to May 2008



- A seasonal pattern continues to be evident in the data on homophobic, biphobic and transphobic crimes and incidents, with higher levels tending to occur in the summer.